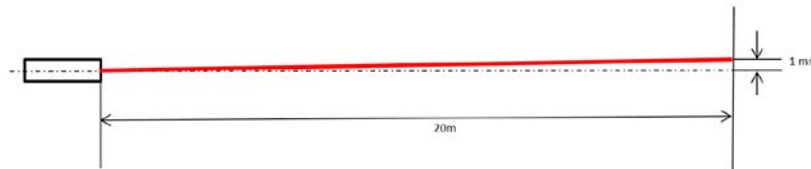




Precision Laser Modules LT-PLM Series

The precision laser modules of the LT-PLM series are precisely aligned and adjusted dot lasers for alignment tasks. The laser beam is dot-shaped (not elliptical) and deviates after a distance of 20 m by less than 1 mm from the mechanical axis of the housing.







Characteristics

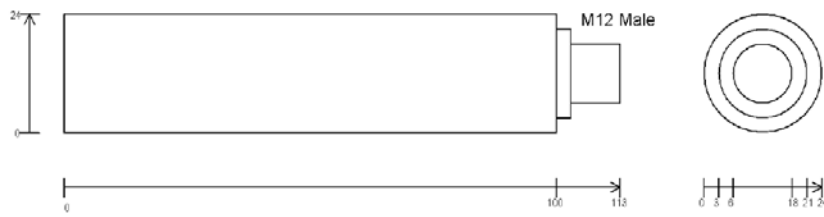
- Axis of laser beam and mechanical axis of housing in the same line
- Circular beam profile
- No laser safety eyewear required
- H6 fit
- Broad supply voltage range with M12 connector
- Integrated rechargeable battery for 10 hours independent and cable-free laser power (LT-PLM-IRB-635-01)

Applications

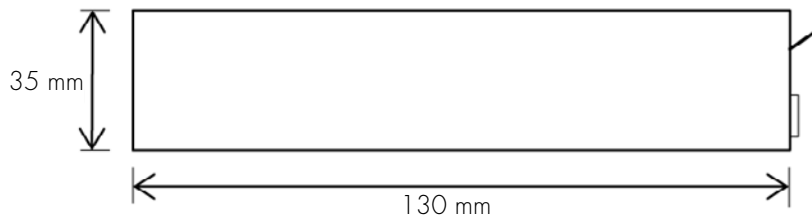
- Alignment of machines
- Straightness test of crabs and carriages
- Concentricity test of rotating parts
- Aiming or positioning tasks

Specifications

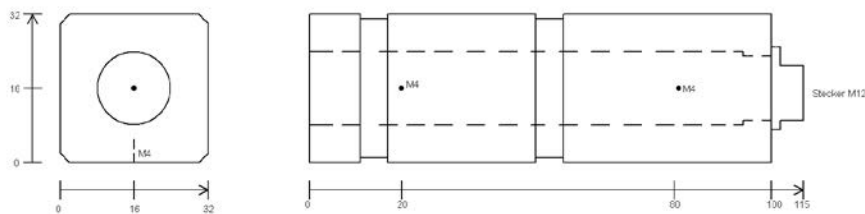
Typ	 LT-PLM-635-01/ LT-PLM-532-01	 LT-PLM-635-01-C1	 LT-PLM-Q-635-01/ LT-PLM-Q-532-01	 LT-PLM-IRB-635-01/ LT-PLM-IRB-635-01-C1
Wavelength	635 nm / 532 nm	635 nm	635 nm / 532 nm	635 nm
Output Power	1 mW	1 mW	1 mW	1 mW
Laser Class	2	2	2	2
Beam Profile	circular, collimated	circular, collimated	circular, collimated	circular, collimated
Beam Diameter at Exit	4.5 mm/1.5 mm	1 mm	4.5 mm/1.5 mm	4.5 mm/1 mm
Recommended Working Distance	0 – 10 m	0 – 3 m	0 – 10 m	0 – 10 m/ 0 – 3 m
Beam Divergence	~ 0.2 mrad/~1 mrad	~1 mrad	~ 0.2 mrad/ ~1 mrad	~ 0.2 mrad/~1 mrad
Warm Up Time	~ 10 min	~ 10 min	~ 10 min	~ 10 min
Beam Pointing Error	0.05 mrad	0.05 mrad	0.05 mrad	0.05 mrad
Supply Voltage	4.5 – 30 VDC / 5 – 30 VDC	4.5 – 30 VDC	4.5 – 30 VDC / 5 – 30 VDC	
Rechargeable Battery Capacity				400 mAh
Operating time				10 h
Current Consumption	~50 mA/< 300 mA	~50 mA	~50 mA/< 300 mA	
Connector	M12 male (Pin 1:+/ Pin 3: GND)	M12 male (Pin 1:+/ Pin 3: GND)	M12 male (Pin 1:+/ Pin 3: GND)	
Housing	Aluminum, black anodised, isolated	Aluminum, black anodised, isolated	Aluminum, black anodised, isolated	Aluminum, black anodised, isolated
Dimensions	100 mm length, 24 mm diameter h6 fit	100 mm length, 24 mm diameter h6 fit	100 mm length, 32 mm x 32 mm	130 mm length, 35 mm diameter h6 fit
Operating Temperature	-10 °C to + 50 °C/ +15 °C to +35 °C	-10 °C to + 50 °C	-10 °C to + 50 °C/ +15 °C to +35 °C	-10 °C to +50 °C
Options	Higher output powers Adjustable output power	Higher output powers Adjustable output power	Higher output powers Adjustable output power	
Accessories	Power Supply Battery Pack Connecting cable	Power Supply Battery Pack Connecting cable	Power Supply Battery Pack Connecting cable	
Scope of delivery	Precision laser module Carrying case	Precision laser module Carrying case	Precision laser module Carrying case	Precision laser module Battery charger Carrying case



LT-PLM-635-01



LT-PLM-HRB-635-01



LT-PLM-Q-635-1

M12 Power Supply and Battery Pack

LT-PLM-PS-12: Universal Power Supply for 100 – 240 Volts AC

This Power Supply can be used worldwide with all laser modules having a M12 connector. It is not to be used with other equipment than specified.

LT-PLM-PS Power Supply

Content of delivery	power supply, 4x plug adapter (Europe, UK, USA, Japan)
Operating voltage	100 – 240 VAC / 50 – 60 Hz
Output voltage	12 VDC
Output current	300 mA
Cable length	1.8 m
Connector	M12 female (Pin 1: + / Pin 3: GND)
Operating temperature	-20 °C to + 60 °C



LT-PLM-AP-2: Battery Pack for Mobile Applications

This battery pack power supply can be used in mobile applications with all laser modules having a M12 connector. It is not to be used with other equipment than specified. The battery pack and the Charger are designed for indoor use only.

LT-PLM-AP Battery Pack

Content of delivery	battery pack, charger, M12 cable 4 x plug adapter (Europe, UK, USA, Japan)
Input voltage	100 – 240 VAC / 50 – 60 Hz
Output voltage	5.0 VDC
Capacity	2400 mAh
Operating temperature	-20 °C to + 60 °C
Connector	M12 (Pin 1: + / Pin 3: GND)
Cable length	2 m
Dimensions	80 mm x 75 mm x 30 mm

